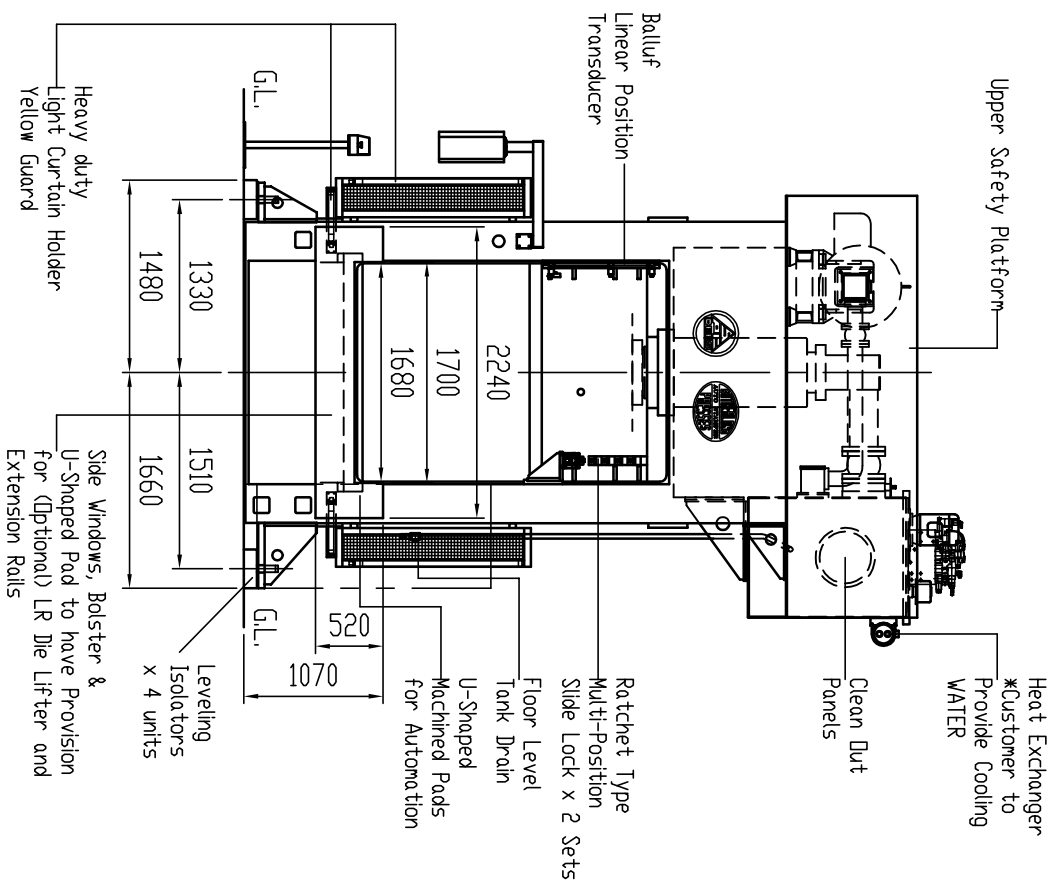
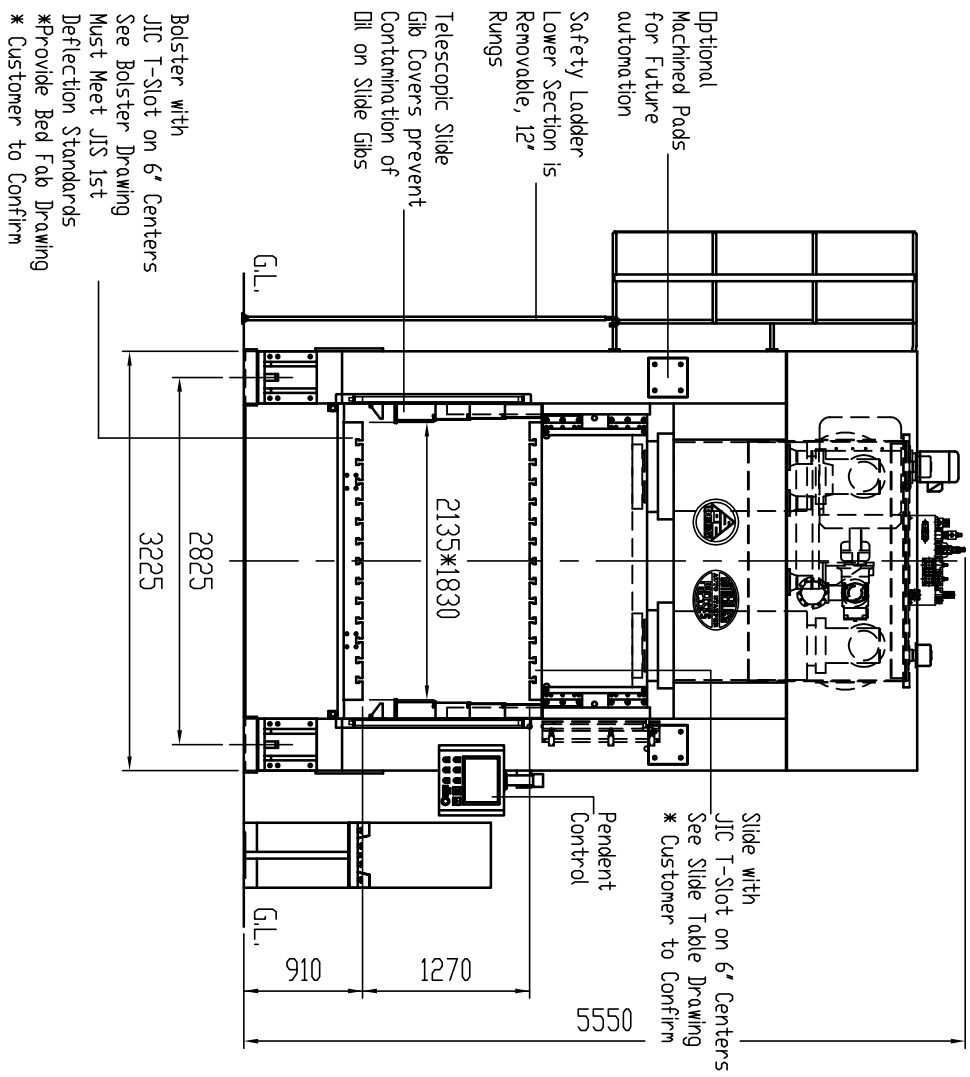
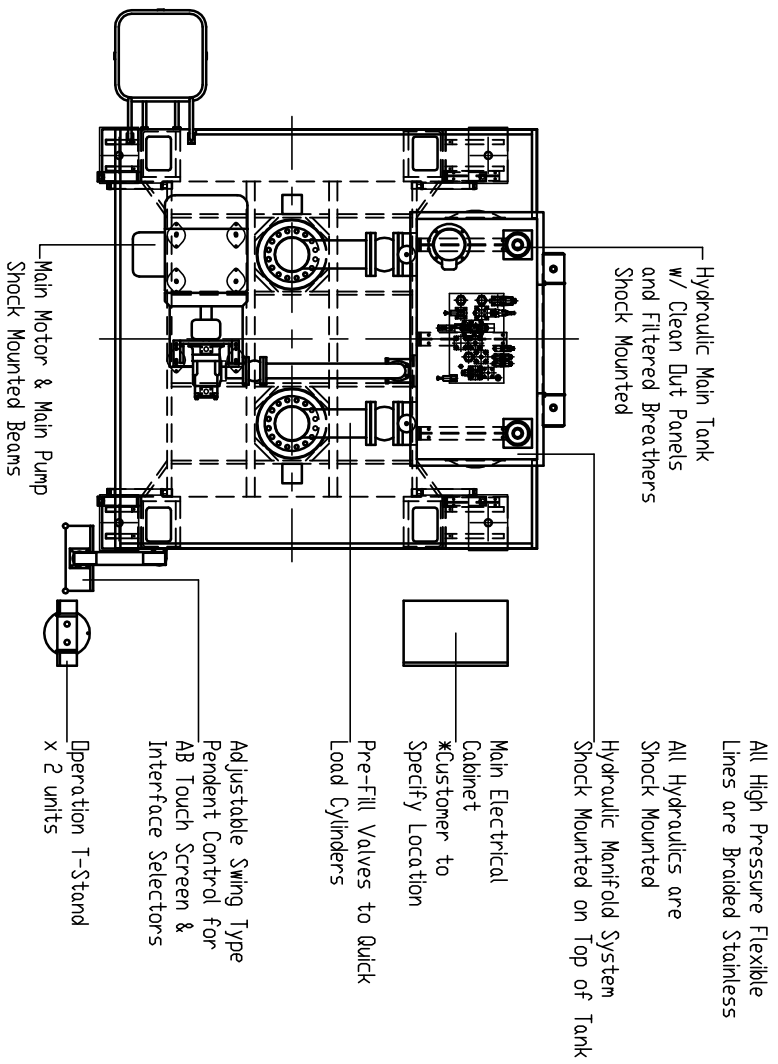
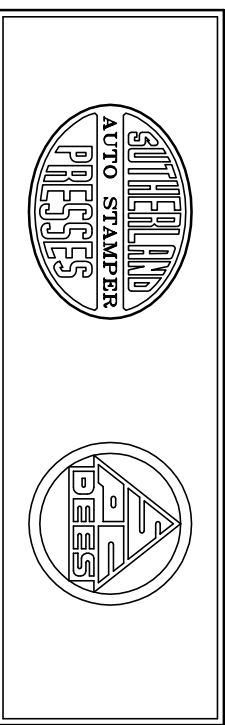


# 29071-SUTHERLAND-HD-600



Main Tank Dilt Volume	ISD VG46 ANTI-WEAR
Type of Dilt	
Cooling Water Flow Rate GPM	282
Inlet Temperature	30°C
Outlet Temperature	35°C
Fitting Size	1 1/4"
Main Motor AMP Draw	180Amp



CUSTOMER	Webasto Sunroofs, Inc.	
MODEL	HD2-660-84-72	
P.D.	200403007	
SERIAL NO.	200403007	

MAIN PRESS		
CAPACITY	600	TONS
WORKING PRESSURE	228	KG/CM <sup>2</sup>
DIA. OF MAIN RAM	ø400*ø410*2	UNITS
STROKE	660	MM
DAYLIGHT	1270	MM
AREA OF SLIDE TABLE	2135*1830	MM
AREA OF BOLSTER	2135*1830	MM
SPEED		
MAIN PRESS DOWNWARDS	APPRDX. 330	MM/SEC
MAIN PRESS UPWARDS	APPRDX. 380	MM/SEC
FAST PRESSING	APPRDX. 35	MM/SEC
SLDW PRESSING	APPRDX. 14	MM/SEC

PUMP AND MOTOR		
MAIN VANE PUMP	T6EES-072-066-5R03-A10	1 SET
DISPLACEMENT	528	L/min
MAIN MOTOR	125HP*6P	1 SET
LUBRICATION MOTOR	25W	1 SET
POWER		
ELECTRIC POWER	480V*60HZ*3PHASE	
OPERATION ELECTRIC SOURCE	110V*60HZ*1PHASE/24V DC	

DATE	09 23 '2004	UNITS	MM	SUTHERLAND PRESSES	
SCALE	1:55				
DESIGN	ERIC	DRAWING	ND.		01-01-01
DRAWN	ERIC	DRAWING	ND.		01-01-01
CHECKED		DRAWING	NAME	HD2-660-84-72	
MFG ND.		DRAWING	NAME	GENERAL VIEW	